



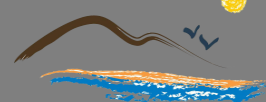
Pittwater Press

Ph: 9999 4035

Fax: 9979 5088

Mona St, Mona Vale 2103

PENINSULA
COMMUNITY
OF SCHOOLS



Term 2 Week 8

14 June 2016



Principal's Report - Jane Ferris

We would like to congratulate the incoming student Prefect body for 2016-2017.



GIRLS

Poppy Berridge
Katherine Berry
Raheli Cabala
Zoe Crosse
Isabella Curtis
Zara Harrison (**Vice Captain**)
Claudia Haworth
Kobie Heather
Jordyn Hess (**Captain**)
Isabella Howard
Laura Newman
Ashley Van Raad

BOYS

Nelson Blackall
Noah Coopey (**Captain**)
Zachary Dinter
Liam Doherty
Alec Farrow (**Vice Captain**)
Dylan Ferguson
Callum Hemsworth
Ek Lambert Leplastrier
Harry Lush
Kelly Nicol
Jenzy Ocampo
Matthew Simons

DEPUTY PRINCIPALS' REPORT - Renee Andrews; Rachel Fleming

SECRET BLOKE'S BUSINESS

The young men in Year 10 attended Secret Bloke's Business, earlier this term. The main focus behind SECRET BLOKE'S BUSINESS was a frank, open and down-to-earth presentation examining critical issues such as; peer pressure, decision making, self discipline, respect, motivation and essential keys required for success. Three key elements addressed in the presentation were:

- **Taking responsibility for yourself and your action** - Dealing with peer pressure (eg drink driving)
- Date Rape- Actions & Consequences - Legal Definitions Alcohol/Drugs Complaint process Self Discipline/Respect - When "No" means "No"
- **Life is all about choice** - Aggression Vs Assertion
- Motivation
- Ten essential keys to success

The importance of respect and self discipline and learning from your mistakes
The boys came away from the presentation with an increased knowledge of:

- They have also participated in a drug education workshop by the wake up foundation and looked at organisational skills in preparation for the Senior School.

BACK OFF!

The young women in Year 10 participated in a workshop earlier in the term that looked at the importance of respectful relationships and drug education.

The Back Off! workshop last week with girls from Barrenjoey High School helped them develop an understanding of how young women think and react in volatile situations as well as how offenders think. They explored the terms sexual harassment, understanding pressure and 'date rape' and the importance of trust in relationships.

With this foundation in place the girls started to recognise that the knowledge they take into a situation often determines their ability to get out of it. They actively participated in self-defence strategies and had the opportunity to ask questions and participate in frank discussions around the relationship issues they may face.

PHS UNIFORM SHOP
will be **CLOSED** on Thursday 16 June 2016
Sorry for any inconvenience

CALENDAR

| | |
|------------------------------------|-------------------------|
| Year 12 Stu Vac 16 & 17 June | Year 11 Camp 22-24 June |
| Waves for water muffin day 16 June | |
| Trial HSC 20 June to 1 July | |

YEAR 7 TECHNOLOGY (MANDATORY)

Timber/Graphics unit

As a part of staff professional development best practice at Pittwater High School we have embarked on a program of peer lesson observations. Staff set their own quality teaching goals and pair up with another colleague to observe each other. Afterwards they give feedback and discuss any opportunities to develop in future lessons. Ms Ferris came to observe my lesson and was a special guest in the 7Tec5 class earlier in term one. She observed the students learning intricate details about abrasive papers, the importance of the finishing process used in timber manufacture and how to achieve high quality products. They were challenged to explain why using abrasive paper would enhance the final quality of their own treasure box and why it is important to sand with a cork block and not just with hands.

Throughout the Timber/Graphics unit the class were focussed, driven and industrious, and have produced some beautiful timber treasure boxes that have been lined with felt. Last week the class visited Ms Ferris in her office to show her the final results. She was certainly pleased with the outcome and emphasised the importance of learning throughout the process and inquired what the indicators of the successes were (what did you do well?) and where improvements could have been made, had the projects been made again. **Carolyn Samojlowicz**





Congratulations to Georgie Lyons, and Julia Hardy, who are performing in the family friendly classic Annie the musical in June with Mosman Musical Society as one of the orphans July.

The show features several regular MMS performers and showcases some new local talent, particularly with the 21-strong cast of girls who play the mischievous and lovable orphans. The performance has been 'double cast' which means that Georgie and Julia will each appear in four shows each.

Set in the 1930's, Annie tells the story of a hopeless orphan who is desperate to find her long lost parents. Annie encounters the tyrannical Miss Hannigan and her conniving brother Rooster in her quest, and is helped by the kind and wealthy Mr Warbucks, telling the story through favourite songs such as *Tomorrow* and *It's a Hard Knock Life*.

Annie opens Friday 17th June at the Zenith Theatre in Chatswood, running for eight performances to 25th June. Tickets are selling fast at <http://premier.ticketek.com.au/shows/show.aspx?sh=ANNIEZEN16&v=ZEN>

Georgie will be performing on Friday 17 June, Saturday 18 June Thursday 23 June -7.30pm and Saturday 25 June - 2pm

Julia will be performing on Saturday 18 June 2.00pm, Sunday 19 June 3 pm, Friday 24 June 7.30 pm, Saturday 25 June 7.30 pm

SIDE BY SIDE: BRINGING FUN BACK TO FAMILY!



**Do you feel like you have run out of answers for parenting your child?
Are you feeling stressed and overwhelmed?**

The Health Psychology Unit, UTS is offering a **free treatment** research program for families who have children with behavioural problems.

Clinical psychologists from the Unit located near Royal North Shore Hospital will see families with children aged 7-14 for up to 16 sessions.

For more information please contact Dr Rachael Murrihy on **9514 4077** or at Rachael.murrihy@uts.edu.au

Website: www.uts.edu.au/research-and-teaching/our-research/health-psychology-unit

Like us on facebook: 'Side by Side Project UTS'

DRAMA EXCURSION

The Composer is Dead



Nestled on the bank of the Parramatta River, the Riverside Theatre stands tall among other buildings. This theatre hosts many fantastic productions boasting high-class celebrities and rising talents. My first experience at the Riverside theatre was when I walked through the front doors on a sunny Friday afternoon to be greeted by kind staff and a luxurious lobby. I was able to find information on the show and the front of house was always happy to help me. Past the lobby I found myself a seat in a high ceilinged and modern courtyard. But I was not here to be sitting in some courtyard, gazing at the sky. I was here to see a production – 'The Composer is Dead'. This musical production was created by the writing genius Lemony Snicket along with the musical talents of Nathaniel Stookey. This production also features the AMAZING Sydney Symphony Orchestra (SSO) who enlightens and creates magic with every note... The production was performed at SSO's Sydney school concerts from 18 to the 20 May at the Riverside Theatre. It was also performed at the Sydney Opera House on 22 of May.

Best known by his author's name Lemony Snicket, Daniel Handler is an American author and journalist famous for writing novels such as 'A Series of Unfortunate Events' and 'The Basic Eight'. Nathaniel Stookey is an American classical music genre composer. Along with Snicket, Stookey released 'The Composer is Dead', an orchestral production with narration by Snicket. Watchers of the production

were graced by a tune, beats and melody of classical music which fitted in perfectly with an engaging plot. After worldwide rave reviews about the production, they published the book 'The Composer is Dead', complete with a music CD to listen to while reading. The original idea was an orchestra with narration, but at the performance at the Riverside Theatre the narration is complemented by the acting talents of Frank Woodley. Australian comedian Mr Frank Woodley performs an improvised comedy routine and then excuses himself to reappear as the inspector. World famous and highly commended, the inspector stops at nothing to find out which orchestra member or members have murdered the orchestra's talented and beloved composer. Will it be the strings? The brass? The woodwind? The percussion? Or will it someone much more sinister hiding right under the inspectors nose (not his moustache)? Will this performance reach its uncertain climax or will everything go downhill for the inspector... You'll have to go and watch!

Frank Woodley was once a part of a comedy duo named Lano and Woodley but unfortunately the duo split recently. Fortunately for us though, Frank still performs to this day! The role that Woodley has taken in this play is no easy *zadacha*. Woodley has taken on the role of ... the inspector. Bubbly and bright, the inspector is determined to find the *antagonist* and put him in his rightful place. Woodley has perfected this role and shows great contrast between his different interpretations in instrumental characters. This creates an atmosphere of a frightening but hilarious melodrama.

DRAMA EXCURSION Cont'

The Composer is Dead

The way Woodley portrays his different characters' imitations with such articulation, it makes it feel as though we are listening to real suspects declining their involvement in this *inciting incident*. Woodley throws his body around the stage like a ragdoll and his bouncing and energetic personality makes him very pleasant to listen to. He can slip into different characters at a second's notice and his role as many different characters generates a large amount of comedy throughout the production. In my opinion Woodley could be regarded as one of Australia's best comedy prodigies.

In the production, costumes do not play a major role but I thought I would make a small note on it. The Inspector (Woodley) is dressed in a very fashionable pinstripe suit. Under this he wears a long white sleeved shirt and red vest. He also wears a patterned tie and a very 'realistic' stick-on moustache. In this production, the orchestra seated on stage wear black uniformed clothes and shiny black shoes that sparkle in the light. The stage is a *proscenium arch* and the orchestra sits in formation on the stage. Large overhead lights fill the space with glorious light in which you can see perfectly. Long grey drapes/curtains hang on the side walls and the back wall is tall and brick. The theatre has a nice warm feeling to it and the seats are comfy to sit in. The set is very smart because it incorporates the orchestra's well designed formation into the production's storyline and events.

I believe that this play was very well constructed. Toby Thatcher the conductor has done a fantastic job of readying the orchestra for their accompaniment in this production and the entire performance is enhanced by their presence. All of Woodley's lines fit like a jigsaw piece with the orchestra's music. Presentation was flawless and the entire production didn't have any hiccups. A very well presented performance by both musicians and performers and I was quite impressed by Woodley's recovery after someone screamed something out of the crowd. Smooth sailing. Woodley did an exceptional job at directing himself!

To conclude, I would like to thank and congratulate all the members of 'The Composer is Dead'. Acting, music, storyline, costume, set and presentation were exquisite. Critics don't usually say this but the production was almost flawless in every sense. The role of the inspector was perfectly portrayed by Mr Frank Woodley and the musical delights of the Sydney Symphony orchestra made my heart sing. The storyline is funny and adventurous and appropriate for all ages. This play achieves Snicket and Stookey's goal of introducing and educating people about members of the orchestra. Who knows, maybe one day you'll play an instrument in the orchestra, but you better be quick, or you might decompose!

Max Straetemans
Drama Report 2016



Bundanon Art and Textiles Camp 2016



On 18 May this year students of Visual Arts and Textiles departed for our annual visit to The Bundanon Trust Residency Program. 33 students from years 9-12 attended with two staff and one parent for the two night, three day stay.

In 1993 world famous Australian artist Arthur Boyd bequeathed his two estates (Bundanon and Riversdale) on the Shoal Haven River to the NSW government. A purpose built education and residency building was built at Riversdale. Students visited Arthur's homestead and studio at Bundanon on the first day and then spent the remainder of the program at Riversdale.

We had a fantastic group this year of girls and boys fairly evenly divided across the year groups. Everyone participated at a really high level and everyone really enjoyed the fantastic facilities, gorgeous surroundings and wonderful workshops.

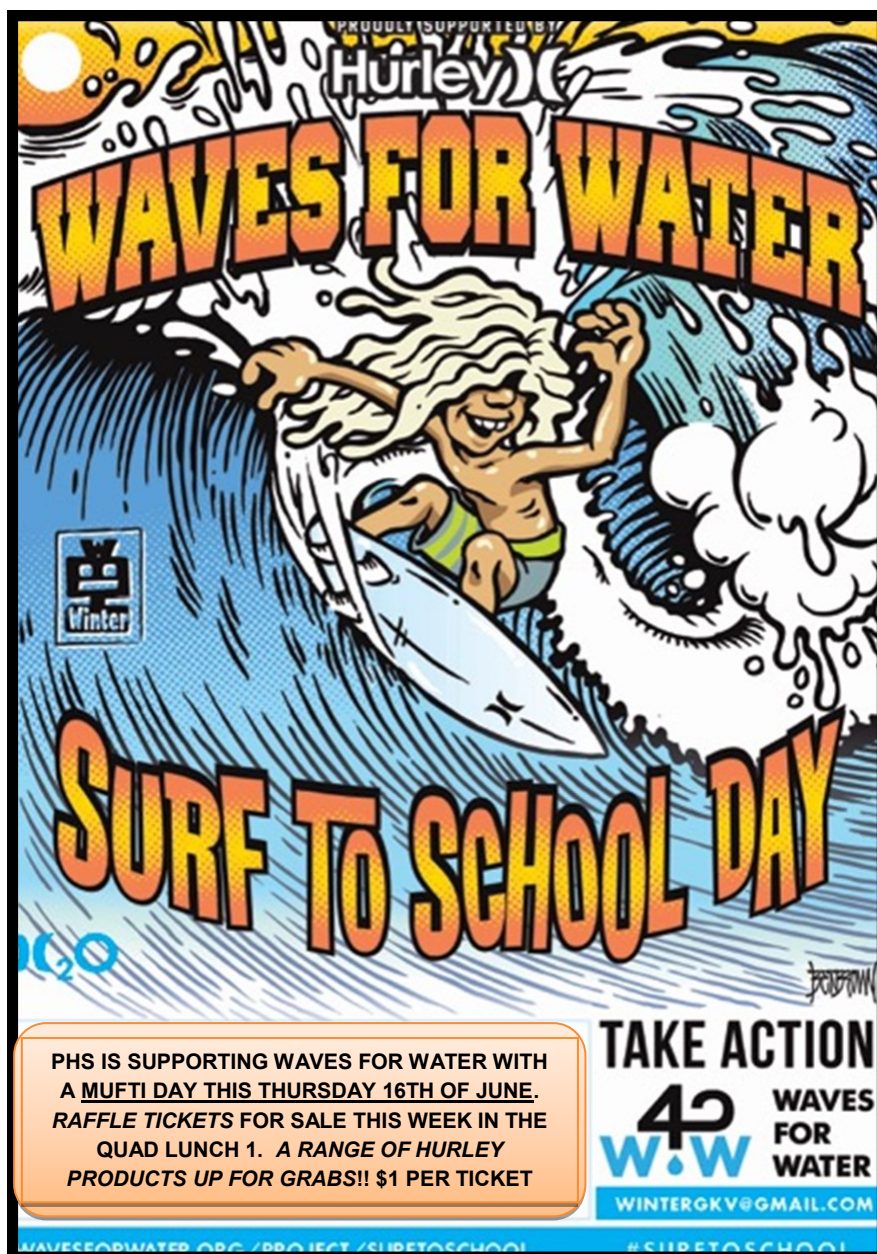


The students engaged in media studies by the riverbank, aboriginal story telling with reed weaving, eco dying fabrics and paper using found plant materials, mono printing and creating their own artists books.

It was a great pleasure to take away this creative and mature group of students. We will be running the camp again next May so keep it in mind for next year.

Rosemary Allan





CANTEEN

Wed 15 June... Helen Mijakovac, Linda Newman, Di Brian
 Thu 16 June... Sheridan Femia, Keryn Gallagher, Sarah Jones
 Fri 17 June... Sunny Van Raad, Alison Crawford, Meredith Cox
 Mon 20 June... Roger Springthorpe
 Tue 21 June... Fiona Griffith, Wendy Mclean, Georgia Bramham
 Wed 22 June... Giovanna Graziano, Nicole Graham, Ange Torres
 Thu 23 June... Robyn Armsworth-Brack, Sheridan Femis, Kylie Bennetts, Monique Stidwell
 Fri 24 June... Behnaz Aliakbari, Joanne Huxtable, Alison Turner
 Mon 27 June... Alison Christensen, Jenny McDowell
 Tue 28 June... Jade Warner, Rustanti Oetojo, Ann Clayton, Natasha Zani

Please advise canteen managers Katrina or Felicity (ph 9999 4035, x122) if you are unable to make your canteen day. Please don't assume you will be covered.

If any parents, friends, family or grandparents would like to assist on any day helpers are needed please contact myself or the Felicity or Katrina in the canteen. A full day is 9am to 2.30 or 3pm. A half day is 3 hours

Fiona Griffith; Canteen Roster Co-ordinator
packfund@optusnet.com.au

YEAR 11 DEBATING

Round 2.



Round 2 of the premier's debating challenge took place on 6 May in which the Year 11 debating team took on Manly Selective's second team to settle the score. This time we were ready to use what we learned from our previous debate and put it all into round 2.

"16 and 17 year olds should be allowed to vote when the marriage equality plebiscite takes place". This was the topic for the debate where we were placed on the negative side of the statement. We began confident and had a strong approach to the topic as we began our short 1 hour preparation time. However it soon dawned on us that there was a possibility that the topic could be interpreted in two different ways. So, after a few minutes of uncertainty, we decided that that there was only one way to go forward: write two speeches. With time ticking away we all worked together to bring forward a strong argument into the debate.

Finally our time was up and the debate began. Soon enough we found that the affirmative team (Manly) took a position that forced us to alter our points of argument on the spot and incorporate our rebutles effectively with speed. We argued that people at this age were still children and did not have the skills yet to make an educated decision on the matter without being influenced by a biased source. We also proved that even if 16 and 17 year olds were allowed to vote in the plebiscite, the effect would not have a strong effect on future government legislation. Thus, as we came to the end of the debate the winner was not clear to us as both sides presented a strong argument. However the adjudicator soon broke the tension awarding the debate to Pittwater High! We were all ecstatic from the result and look forward to round three of the debating competition with our minds focused and ready to argue with passion.

Written By Alec Farrow – Member of the Debating Team

CAREERS NEWS

Parents/Carers: Please don't hesitate to contact me via phone or email if you have any questions.

Years 10- 12: Please check **department emails** regularly for jobs/courses/etc. I am always available in the Library Careers Office if you need to discuss any future plans.

LOCAL JOB: For Year 12 Extension English Students

Do you have a passion for English and love working with children? Then we at 'NumberWorks' would like to hear from you! NumberWorks'nWords Mona Vale are currently seeking English tutors to join our team. We are looking for people who are studying Extension English, have vibrant and fun personalities and are available at least two weekday afternoons per week, between 3:15pm and 6:30pm. If this sounds like you, then please email your expression of interest and current availability to monavale@numberworks.com

Also, checkout www.seek.com.au for more jobs or **The Manly Daily** for local jobs!

Year 10: Careers Lessons this term, once a fortnight. We will be:

Workplace scenarios discussions

Getting the most out of the Careers Expo

Subject Selection discussions

Careers Project-making an exhibitors table for a school expo for year 9

June's Open Days for Private Colleges and Universities:

| ~ June 2016 ~ | | | | | | |
|---------------|-----|---|-----|---|--------|--------|
| ◀ May | | | | | | July ▶ |
| Sun | Mon | Tue | Wed | Thu | Fri | Sat |
| | | | 1 | 2 | 3 | 4 |
| | | | | | | |
| 19 | 20 | 21 Macquarie University Campus Tour | 22 | 23 AIE Information Evening | 24 | 25 |
| 26 | 27 | 28 | 29 | 30 Sydney City School of Business Sydney City School of Law - Information session | Notes: | |

YEARS 10, 11 AND 12 STUDENTS: Please log onto

The [MHSCareers](#) website-Pittwater High School subscribes to this website which **advertises current careers events**. To login: use "[Pittwater](#)" then password "[water](#)". You can also register for email alerts! The "Calendar" is great info! Or for more **general careers information**, look at our Careers website by checking out [CareersWorks](#)! Also, we have created the [Pittwater High Careers](#) website, please have a look and encourage students to **register!!**

I would love some **feedback** on the above websites, please email me on

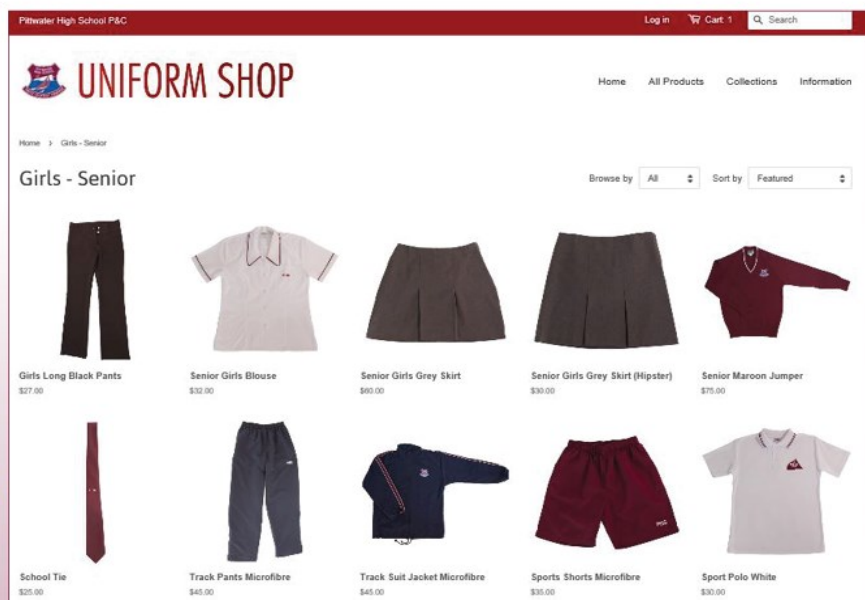
jocelyn.bates@det.nsw.edu.au

J. Bates, (Careers Adviser, EXT 106).



UNIFORM SHOP

Order
Online



Collect from the Uniform Shop / Canteen

Collection times

Shop Opening times

| | | |
|-----------|---------------|---------------|
| Monday | 08:30 - 09:00 | Closed |
| Tuesday | 08:15 - 11:15 | 08:15 - 11:15 |
| Wednesday | 08:30 - 09:00 | Closed |
| Thursday | 08:15 - 11:15 | 08:15 - 11:15 |
| Friday | 08:30 - 09:00 | Closed |

WWW.PHSSHOP.COM

Enquiries 9979 6968, Uniform Shop Manager Kim Gobbe, email kim.gobbe@det.nsw.edu.au.
A selection of second hand uniforms are available via the uniform shop only.

Access the uniform shop online site at <http://www.phsshop.com>