



# Pittwater Press

Ph: 9999 4035  
Fax: 9979 5088  
Mona St, Mona Vale 2103



Term 3 Week 2B

30 July 2012

## PRINCIPAL'S REPORT



Pittwater High School has many fine traditions that we all can be proud of. One such tradition is the Chicago Student Exchange program whereby four of our students have the opportunity to stay with a host family and study at school in Wilmette for a month. Congratulations to Ryan M, Olivia T, Kim G and Rosalind H who have been selected to represent the school in 2013.

Also well done to the other outstanding applicants for putting themselves forward and preparing for the interviews – you certainly impressed the panel. Also at the end of next week we say farewell to the four students who have been at Pittwater High from Wilmette – all the best Evan W, Caroline C, Michael G and Nick A been great ambassadors for your school and this program.

For year 12 students and parents, the following term is very important as new content in subjects is still being delivered, final assessment tasks are being completed and a program of revision is followed. It is never too late to put in an increased effort. On the school website we have posted the Scope and Sequence programming for each subject for the remainder of the term to enable parents to have a better understanding. Go to "School Years; Year 12; Scope and Sequence" for this information.

Thank you to those families who are really getting behind our efforts to raise the standard of school uniform. The uniform has not changed. However if you need clarification of school uniform including shoes please also visit the website. Go to our "School Rules and Policies Pittwater High Uniform".

**Jane Ferris**  
Principal

### Calendar Dates Term 3 Week 2B

Wednesday 25 July	P&C Meeting
Monday 30 July	Year 10 Work Experience
Friday 24 August	Visit to PHS by Bando
to	Junior City High School
Wednesday 29 August	Japan

*be responsible*

*be respectful*

*aspire*

**P & C Meeting**

**TONIGHT**

**(25 July 2012)**

**at 7.30pm in the  
Staff Common  
Room A Block**



**PITTWATER HIGH SCHOOL**

**TAS  
EXHIBITION**

**School Common Room  
Thursday 2nd August 2012  
4pm - 7pm**

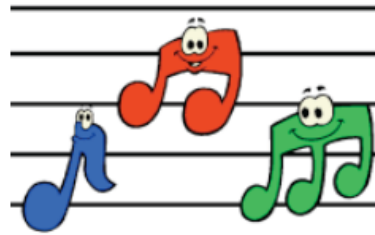
**Please join us to celebrate our  
Year 7 - 10 students' achievements  
in Textiles, Woodwork, Food  
Technology, Jewellery and  
Engineering.  
Refreshments provided.**

**We look forward to seeing you!!**

# Music News

## CONGRATULATIONS

Concert Band: Congratulations on achieving SILVER!  
Symphonic Band: Congratulation on achieving SILVER!  
*A Terrific Team Effort from All Players – PHS is very Proud of You!*



## PERFORMANCES & DIARY DATES:

**\*\* Please continue to check back as various dates are subject to change**

### TERM 3

**Tue 31 Jul** \*DATE CHANGE\* European Tour – “Knowledge on Europe” in Performance Space at 5.45 – 6.15pm

Tue 7 Aug Band Meeting at Pittwater RSL @ 6.30pm in the Auditorium

Tue 14 Aug Combined Concert at Pittwater RSL – Bands & Time TBA

Sat & Sun 25/26 Aug North Coast Band Combined Concert & workshop – Details to follow

### TERM 4

Tue 16 October Symphonic Band performing in the ‘Australis Concert’ at the Opera House.

*Congratulations to James Hill and the musicians of the Concert and Symphonic Bands for achieving SILVER at the NSW Band Championships on the weekend. This was a great effort by everyone and makes the School truly proud.*

*Our great band results are, without a doubt, a team effort. In order that no one lets the side down, could all band students and parents please give the PHS band conductors and/or Ms Cesta, plenty of notice if students are unable to attend concerts so that alternative arrangements can be made. We will help the process by sending out permission notes earlier and by letting parents know, via the music news in the school newsletter, that permission notes have been issued and need signing. Karin Krueger, President.*

### A message to all former Mona Vale Primary School Band Members:

To celebrate its 100 years of existence, Mona Vale Primary School is putting together a Centenary Band of current and former MVPS Band members.

Rehearsal: Sat, 1 September, 2.00 – 4.00pm

Concert: Sat, 15 September, 2.00pm

If you would like to take part and can attend on these times, please let the MVPS Band committee know on: [monavaleband@gmail.com](mailto:monavaleband@gmail.com). Please also state what instrument you will play and give contact details such as mobile 'phone numbers. And please let them know AS SOON AS POSSIBLE.

Come on you Flute, Clarinet, Trumpet, Saxophone and Bassoon player from MVPS – I know you're out there! Please help them to have a terrific celebration ...

If you have any questions please contact Band President Karin Krueger at [karin@kdkmedia.com.au](mailto:karin@kdkmedia.com.au) or 0419 991 267 or Secretary Joanne Gwatkin-Williams at [joanne@thevastydeep.com](mailto:joanne@thevastydeep.com) or Babette Lake (Europe Tour and general info) at [mvlakes@ozemail.com.au](mailto:mvlakes@ozemail.com.au).

## CONGRATULATIONS.....

On behalf of the English Department we would like to congratulate our talented Creative Writer, Meg D of Year 10, who recently won the local Berkelouw Bookstore Writing Competition for the Northern Beaches.

Meg D won the 13-16 years category with her amazing story about our local area, based on the 2012 writing stimulus, "the L90 bus Palm Beach to City".

Congratulations to Meg and all the PHS students who entered writing pieces!



## Canteen News

### Wednesday 25 July

Rani Donohoe	Lee Van Dam
Vicky Gurman	Christine Lanceley

### Thursday 26 July

Kim Grosser	Sharryn Brown
Diane Del Pozo	Jacqui Paton

### Friday 27 July

Debbie Havenstein	Sue Nicol
Tanya Tate	<b>HELP NEEDED</b>

### Monday 30 July

Rad Hammond	Karen Vukobratovich
Hayley Malone	Martha Leonard

### Tuesday 31 July

Leonie Olivari	Shelly Moore
Julie Waldron	

If you are unable to make your rostered day please try to arrange a swap or advise canteen managers Lisa/Katrina (9999 4035; ext 122).

With recent changes canteen helpers are needed for two Friday spots, one Tuesday and one Wednesday. If anyone is available on those days please let me know. It is for one day a month. Even one day a term is a great help.

Thank you to all the helpers that we have this year.

Penny Winterbottom  
Canteen roster co-ordinator  
Pennywinterbottom1@hotmail.com  
0432 679977



The Peninsula Community of Schools is celebrating the diverse flora and fauna that each season on the Northern Beaches of Sydney brings. Have you ever noticed flowers at a particular time of the year or observed a whale off our beaches as it migrates for the winter?

**Students are invited to create an artwork that is a reflection of the diverse flora and fauna that appears each season in our community.**

Your artwork can show flora or fauna from a range of local habitats from oceans, estuaries, lagoons, wetlands and creeks, to a variety of eucalypt forests, littoral rainforest, woodland and heath communities.

Through this competition we hope students will have a greater appreciation of the diverse environment we live in.



Flora of the Spring season



What's in the habitat?



Sharing the waterways



Careful Caretaker lived here

**Students may enter under the following categories:**

**1. Flora and Fauna of the Seasons of the Peninsula**

Create a poster showing flora and fauna of the seasons. You may select just one season that includes a variety of flora and/or fauna or show examples from each season

**2. What's In the Habitat?**

Create a poster that demonstrates the rich diversity and complexity of your chosen Peninsula Habitat such as wetlands, creeks, forests or heaths

**3. Visitors of the Waterways**

Create a poster showing the visitors to our waterways, eg. Whales, penguins, dolphins

**4. Careless Caretakers**

Create a story or storyboard of what our area will be like by the year 2050 if we DO NOT look after it.

**Entries close Monday 10<sup>th</sup> September.**

## How to Enter

The competition is open to ALL children from the Peninsula Community of Schools. The work should reflect an appreciation of our diverse habitats.

### Posters and Stories must be:

- Your own work – it cannot be a copy of someone else's work
- On A4 sized paper
- Illustrations can include words to convey a message but ***should not*** include the student's name, class etc.

### Ensure each poster or story is clearly labelled on the back with:

- Student's full name
- Age
- School
- Year Level (define actual year if student is in a composite class)
- Name of teacher/ contact person  
(Cut out labels have been provided for you)

### When submitting entries:

- Each school is responsible for selecting 3 finalists per class for each of the categories
- A panel of judges will select the winning entries from these finalists
- All participants will receive a certificate
- Entries ***may be used*** for the Peninsula Community of Schools 2013 Calendar

### Terms and Conditions:

- The competition is open to all students from across the Peninsula Community of Schools
- Entries should be from individual students, no joint entries
- Do not mount or laminate illustrations
- Entries will be returned if possible
- The judge's decision will be final and no correspondence will be entered into

**Entries will close on Monday 10<sup>th</sup> September. Finalist entries will be collected from schools on Friday 14<sup>th</sup> September.**

### Important note to teachers and parents:

In running this competition, it is likely that the Peninsula Community of Schools and Macquarie University will report on the poster competition winners and that the students' name, school, year level and any promotional photographs may be published. By entering this competition you consent to these details being published by the Peninsula Community of Schools, Macquarie University and /or the media.

# **EVERY STUDENT, EVERY SCHOOL**

## **NORTHERN SYDNEY REGION**

### **PARENT INFORMATION SESSIONS**

The Department of Education and Communities is implementing a new approach for meeting the additional learning and support needs of students with disability in all NSW public schools through its strategy "Every Student, Every School".

A Learning and Support Framework will be developed in all NSW public schools to improve support for students with disability, wherever they enrol.

A wide range of projects will be put in place during 2012 and 2013 to establish the Learning and Support Framework and assist all public schools to better meet the diverse educational needs of their students, including those with disability.

Three information sessions for parents will be held across the Northern Sydney Region to explain the details behind "Every Student, Every School".

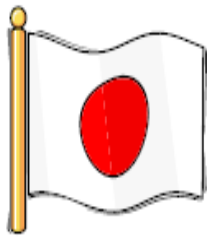
The sessions will be held at the following times and venues:

- **Thursday 26 July**                      Regional Office Dee Why, 72 Fisher Road Dee Why  
(Meeting in main conference room)
- **Monday 30 July**                      Oakhill Drive Public School, Oakhill Drive, Castle Hill  
(Meeting in school library)
- **Wednesday 1 August**              Ryde Secondary College, Forrest Rd Ryde  
(Meeting in H-Block off Forrest Road)

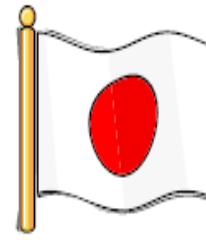
The information sessions will start at 6pm and finish by 8pm.

If you would like to attend one of these information sessions please contact Leanne Mulligan at Hornsby office on 9987 3900 or at [Leanne.mulligan2@det.nsw.edu.au](mailto:Leanne.mulligan2@det.nsw.edu.au)

John Hughes  
Principal Education Officer  
Every Student, Every School  
Northern Sydney Region



## Seeking Host Families



Pittwater High School will soon be hosting a group of 20 students from Bando City Junior High School, Japan.

We are seeking friendly families to host one student each for 5 nights. This is a great opportunity to share the wonderful lifestyle of the Northern Beaches with a visitor, learn about another culture and maybe even pick up a few words of Japanese!

The group will arrive on Friday, August 24th (after school) and leave on Wednesday, August 29th. During this time families will need to provide their visitor with accommodation, 3 meals a day and transfers to and from school. They will also have the weekend to spend with their visitor as they please. Hosting families will receive \$200 towards the cost of the homestay.

The visiting students are aged 12, 13 and 14 so families with a student in year 7, 8 or 9 would be ideal, but any interested families are encouraged to apply.

If you would like to host a student please respond by email ([colleen.lustig@det.nsw.edu.au](mailto:colleen.lustig@det.nsw.edu.au)) or return the slip below to Colleen Lustig in the language staffroom (B block).

---

We would like to host a Japanese student August 24th - 29th

Family name: \_\_\_\_\_

Student name(s) and year(s): \_\_\_\_\_

Contact email/phone: \_\_\_\_\_